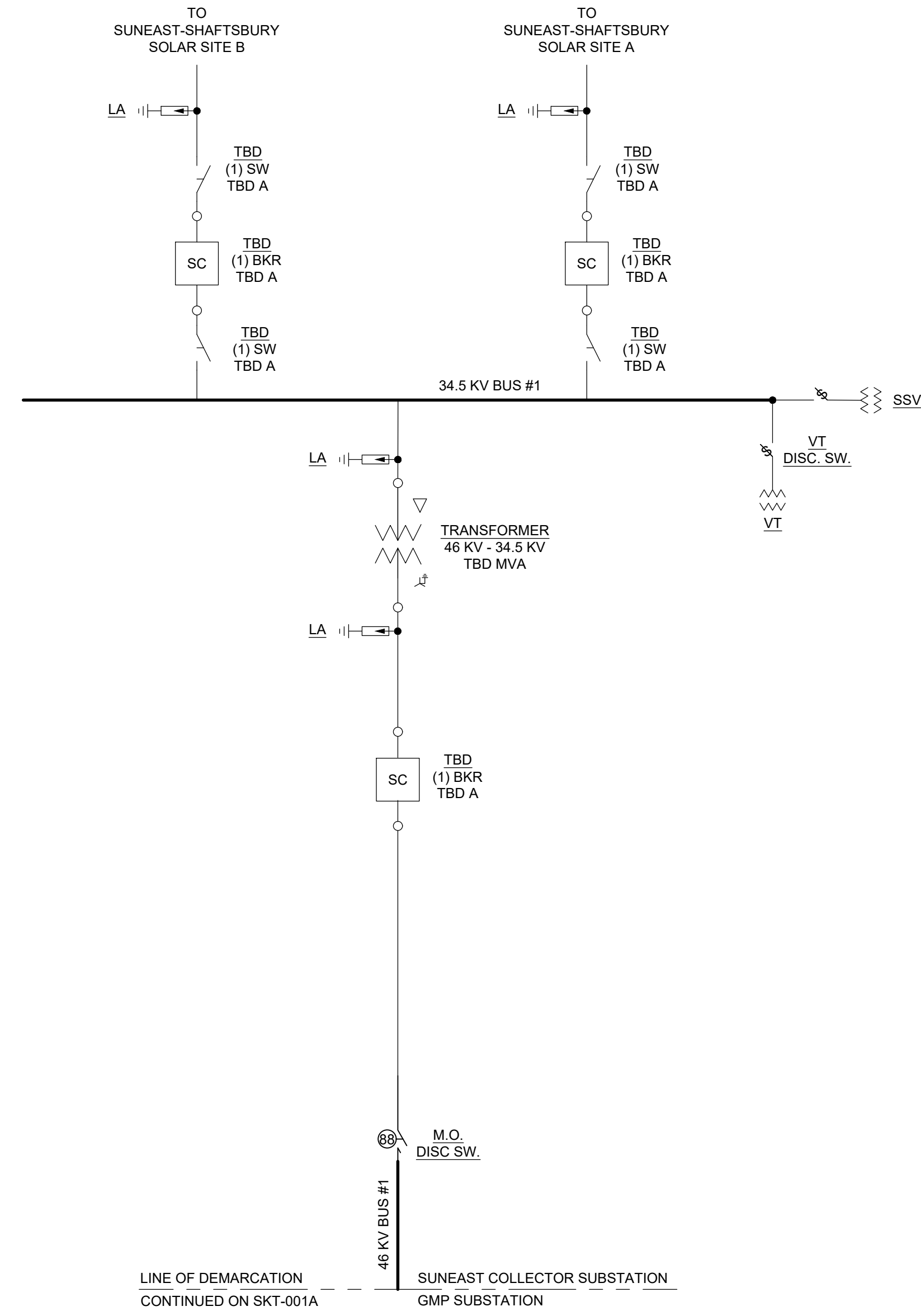


- NOTES:
- ONE LINE AND ALL ASSOCIATED EQUIPMENT SHOWN IS FOR CONCEPTUAL PERMITTING PURPOSES ONLY.
 - TRANSFORMER RATINGS SHOWN ARE BASED OFF OF INTERCONNECTION AGREEMENT DOCUMENTS.
 - ALL EQUIPMENT AND LOCATIONS ARE SUBJECT TO CHANGE.



SKETCH

PRELIMINARY
NOT FOR CONSTRUCTION

REV.	DESCRIPTION:	DATE:	RDO:	ZJS:	JDM:
B	ISSUE FOR REVIEW	03/10/23	RDO	ZJS	JDM
A	ISSUE FOR REVIEW	12/07/22	RDO	ZJS	JDM



SHAFTSBURY SOLAR COLLECTOR SUBSTATION

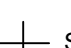
SCALE: NTS SHAFTSBURY, VT SIZE: ARCH D

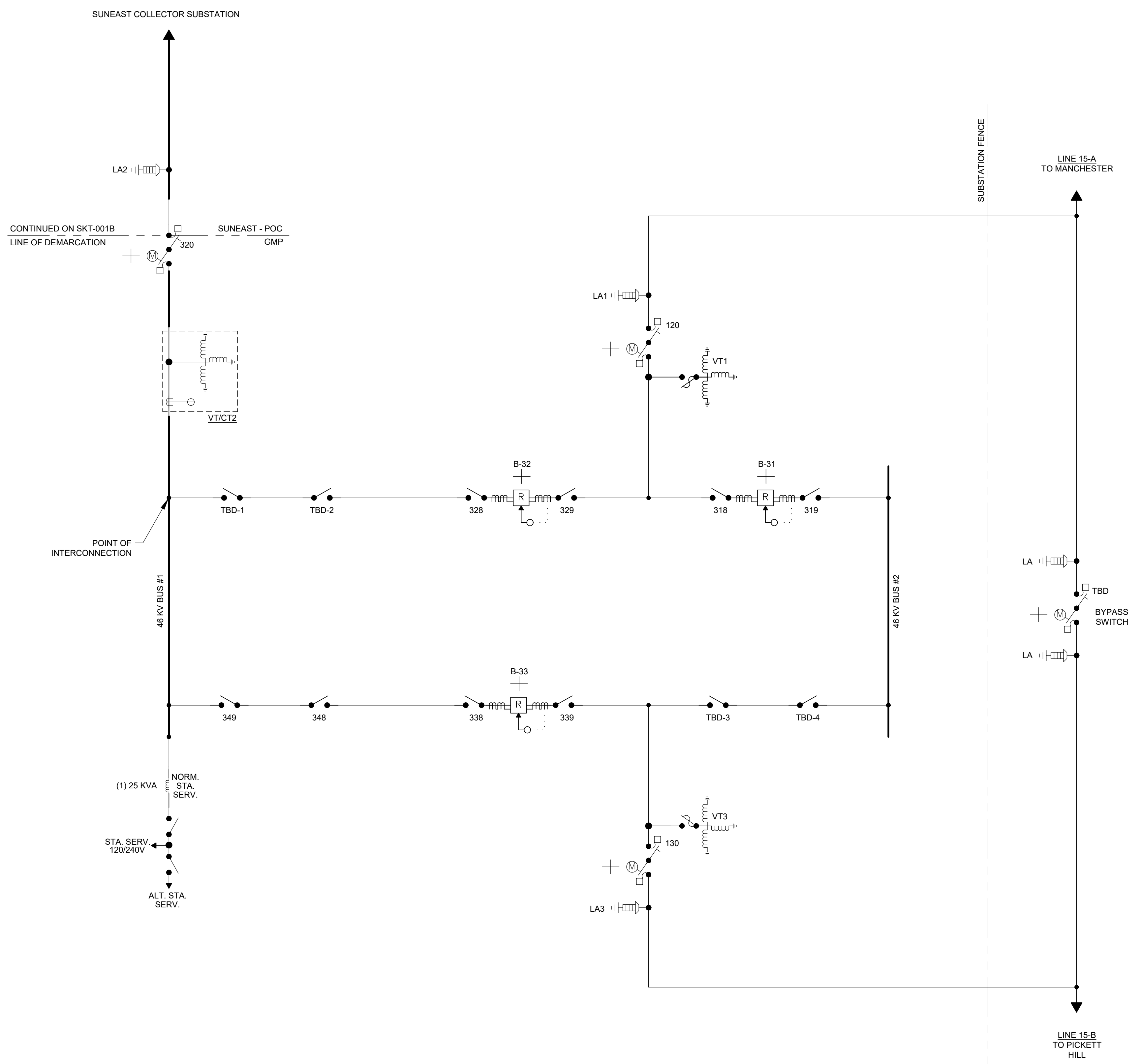
SOLAR COLLECTOR SUBSTATION ONE-LINE DIAGRAM

DATE:	12/2/2022
DRAWN BY:	CJL
ENGINEER BY:	ZJS
PROJECT #:	25225-SB
DRAWING #:	SKT-001B

4/19/2023 9:24 AM - JUSTIN.M. N:\ACTIVE PROJECTS\25225_VHBS(SUNEAST)_SHAFTSBURY_& FAIR_HAVEN_SS_UPGRADE_& T&D_INTERCONNECT\06-DRAFTING\WORKING DRAWINGS\SUBSTATION\SHAFTSBURY\25225-SB SKT-001A.DWG

- NOTES:**
- ONE LINE AND ALL ASSOCIATED EQUIPMENT SHOWN IS FOR CONCEPTUAL PERMITTING PURPOSES ONLY.
 - ALL EQUIPMENT AND LOCATIONS ARE SUBJECT TO CHANGE. ALL EQUIPMENT NOMENCLATURE IS FOR ILLUSTRATIVE PURPOSES IN COORDINATION WITH OTHER PERMITTING SKETCHES INCLUDED IN THIS PACKAGE OF DRAWINGS.
 - VT2 IS A COMBINATION VT/CT TRANSFORMER.

LEGEND:
 SUPERVISORY CONTROL



SKETCH

PRELIMINARY
NOT FOR CONSTRUCTION

REV.	DESCRIPTION:	DATE:	RDO:	ZJS:	JDM:
-	-	-	-	-	-
C	ISSUE FOR REVIEW	04/20/23	RDO	ZJS	JDM
B	ISSUE FOR REVIEW	03/10/23	RDO	ZJS	JDM
A	ISSUE FOR REVIEW	12/07/22	RDO	ZJS	JDM



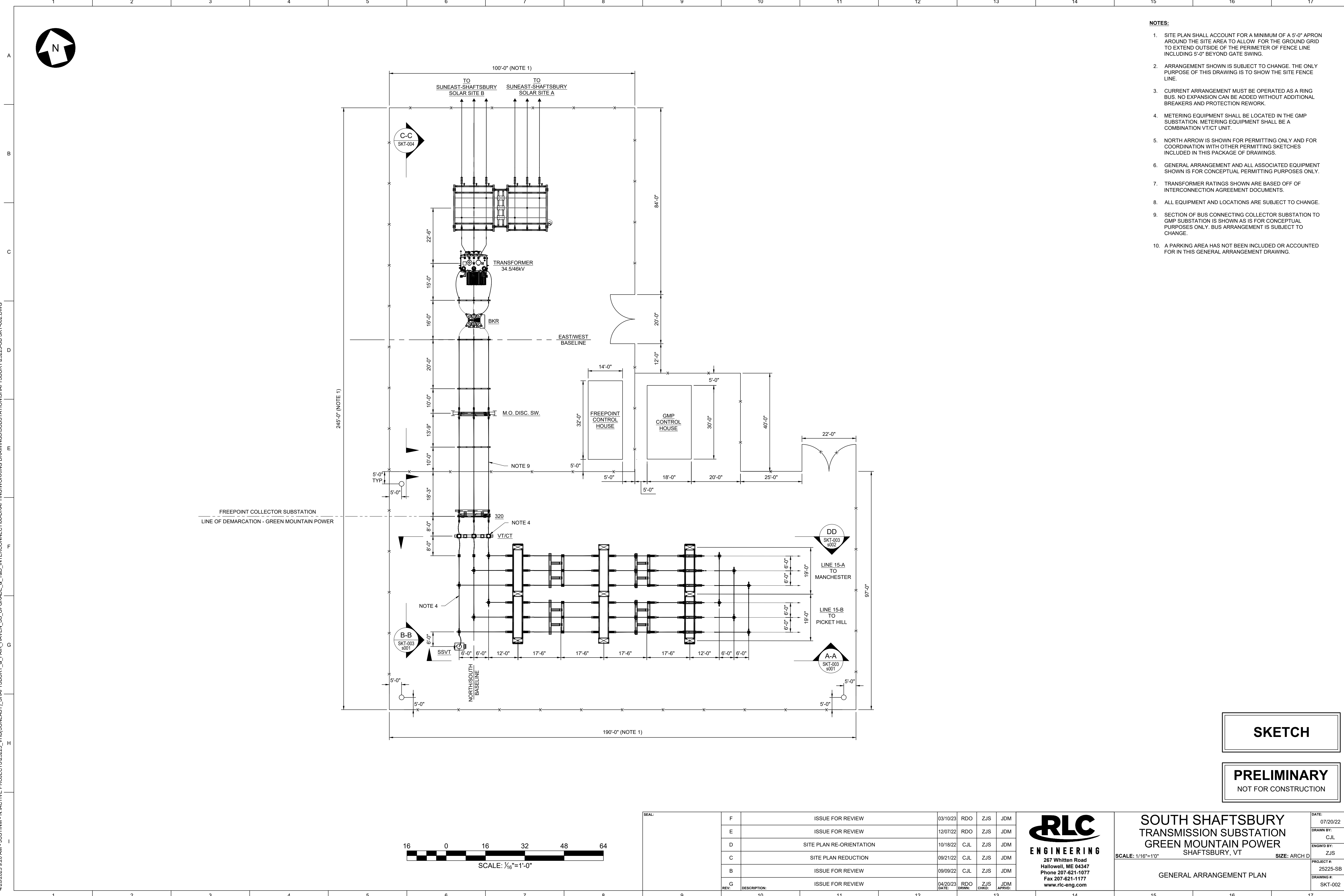
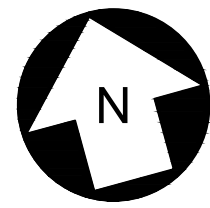
SOUTH SHAFTSBURY TRANSMISSION SUBSTATION GREEN MOUNTAIN POWER
 SHAFTSBURY, VT

SCALE: NTS SIZE: ARCH D

POWER ONE LINE DIAGRAM

DATE:	12/2/2022
DRAWN BY:	CJL
ENGINEER BY:	ZJS
PROJECT #:	25225-SB
DRAWING #:	SKT-001A

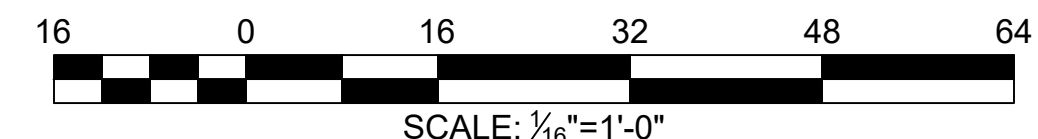
4/20/2023 9:20 AM - JUSTINM - N:\ACTIVE PROJECTS\25225_VHB\SUNEA\T\SHAFTSBURY_& FAIR_HAVEN_SS_UPGRADE_& T&D_INTERCONNECT\06-DRAFTING\WORKING DRAWINGS\SUBSTATION\SHAFTSBURY\25225-SB SKT-002.DWG



- NOTES:**
1. SITE PLAN SHALL ACCOUNT FOR A MINIMUM OF A 5'-0" APRON AROUND THE SITE AREA TO ALLOW FOR THE GROUND GRID TO EXTEND OUTSIDE OF THE PERIMETER OF FENCE LINE INCLUDING 5'-0" BEYOND GATE SWING.
 2. ARRANGEMENT SHOWN IS SUBJECT TO CHANGE. THE ONLY PURPOSE OF THIS DRAWING IS TO SHOW THE SITE FENCE LINE.
 3. CURRENT ARRANGEMENT MUST BE OPERATED AS A RING BUS. NO EXPANSION CAN BE ADDED WITHOUT ADDITIONAL BREAKERS AND PROTECTION REWORK.
 4. METERING EQUIPMENT SHALL BE LOCATED IN THE GMP SUBSTATION. METERING EQUIPMENT SHALL BE A COMBINATION VT/CT UNIT.
 5. NORTH ARROW IS SHOWN FOR PERMITTING ONLY AND FOR COORDINATION WITH OTHER PERMITTING SKETCHES INCLUDED IN THIS PACKAGE OF DRAWINGS.
 6. GENERAL ARRANGEMENT AND ALL ASSOCIATED EQUIPMENT SHOWN IS FOR CONCEPTUAL PERMITTING PURPOSES ONLY.
 7. TRANSFORMER RATINGS SHOWN ARE BASED OFF OF INTERCONNECTION AGREEMENT DOCUMENTS.
 8. ALL EQUIPMENT AND LOCATIONS ARE SUBJECT TO CHANGE.
 9. SECTION OF BUS CONNECTING COLLECTOR SUBSTATION TO GMP SUBSTATION IS SHOWN AS IS FOR CONCEPTUAL PURPOSES ONLY. BUS ARRANGEMENT IS SUBJECT TO CHANGE.
 10. A PARKING AREA HAS NOT BEEN INCLUDED OR ACCOUNTED FOR IN THIS GENERAL ARRANGEMENT DRAWING.

SKETCH

PRELIMINARY
NOT FOR CONSTRUCTION



REV.	DESCRIPTION	DATE	DRWN.	CHKD.	APPRD.
F	ISSUE FOR REVIEW	03/10/23	RDO	ZJS	JDM
E	ISSUE FOR REVIEW	12/07/22	RDO	ZJS	JDM
D	SITE PLAN RE-ORIENTATION	10/18/22	CJL	ZJS	JDM
C	SITE PLAN REDUCTION	09/21/22	CJL	ZJS	JDM
B	ISSUE FOR REVIEW	09/09/22	CJL	ZJS	JDM
G	ISSUE FOR REVIEW	04/20/23	RDO	ZJS	JDM

RLC ENGINEERING
267 Whitten Road
Hallowell, ME 04347
Phone 207-621-1077
Fax 207-621-1177
www.rlc-eng.com

**SOUTH SHAFTSBURY TRANSMISSION SUBSTATION
GREEN MOUNTAIN POWER
SHAFTSBURY, VT**

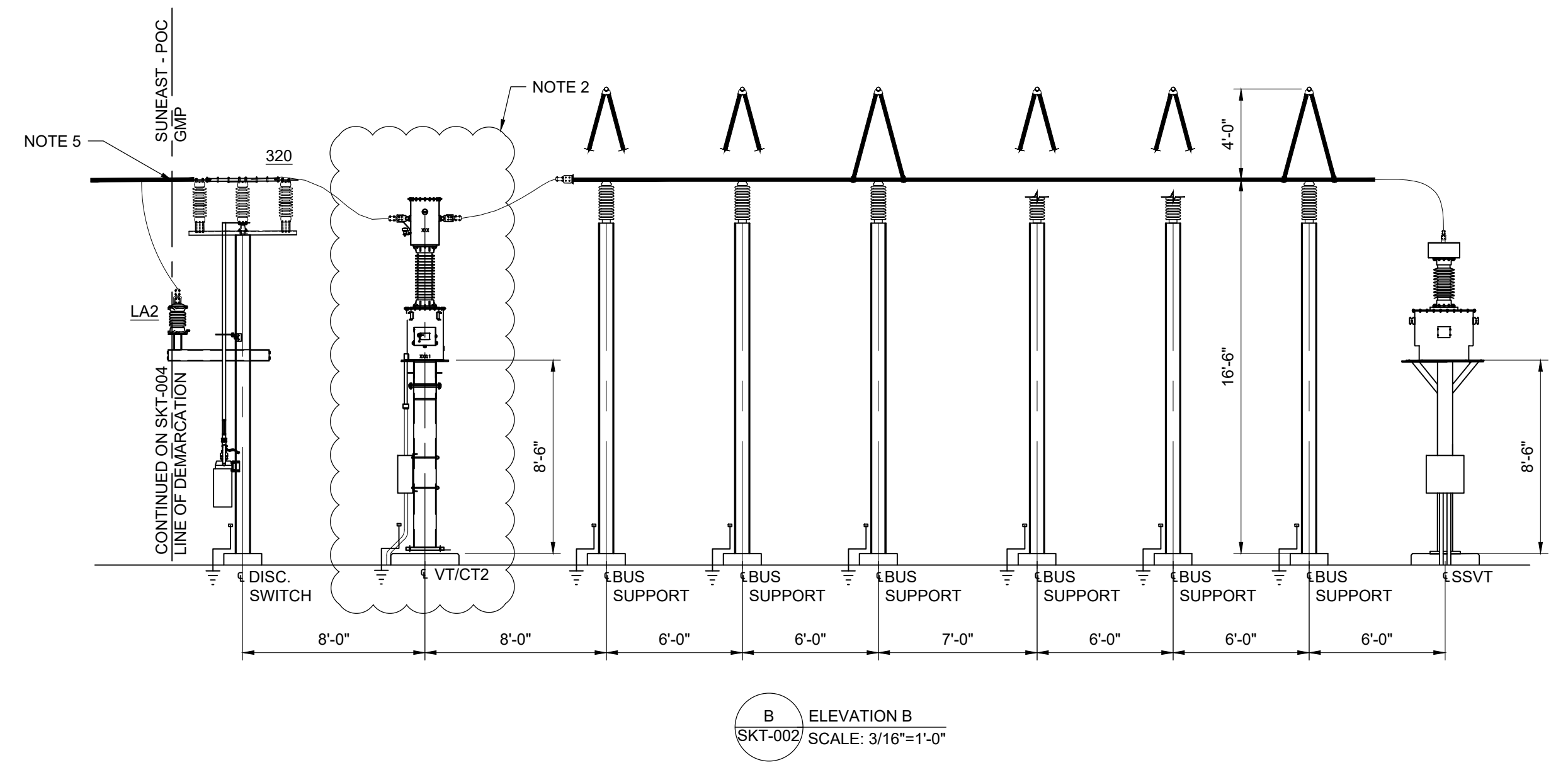
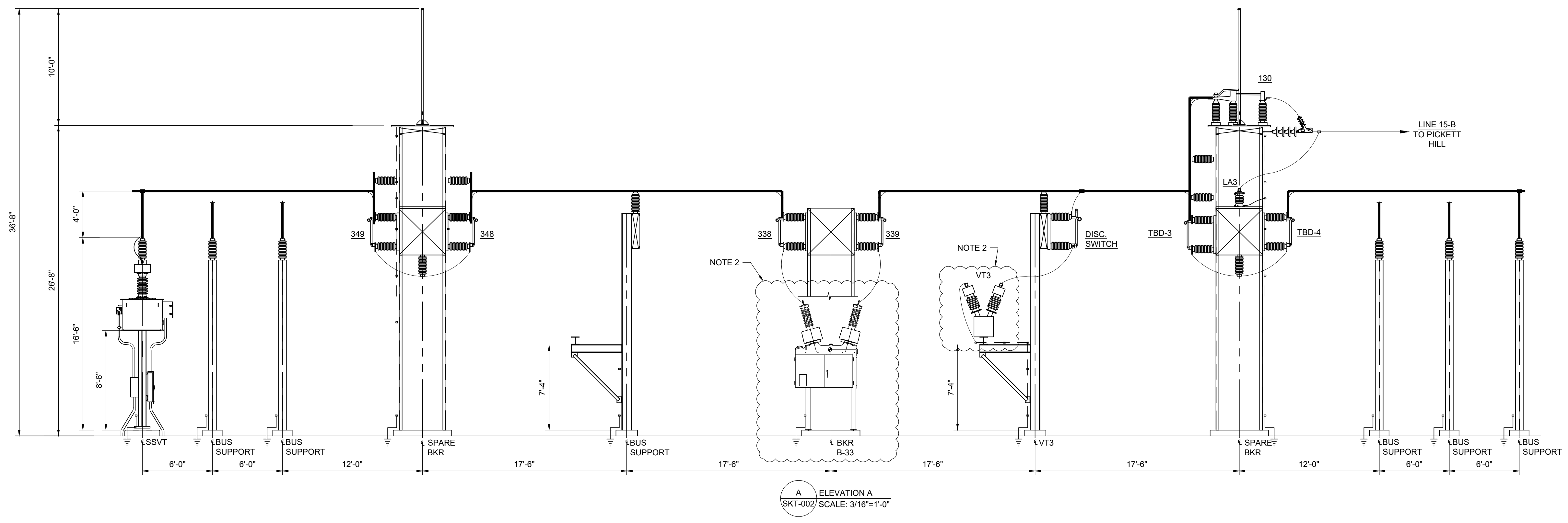
SCALE: 1/16"=1'0" SIZE: ARCH D

GENERAL ARRANGEMENT PLAN

DATE:	07/20/22
DRAWN BY:	CJL
ENGINEER BY:	ZJS
PROJECT #:	25225-SB
DRAWING #:	SKT-002

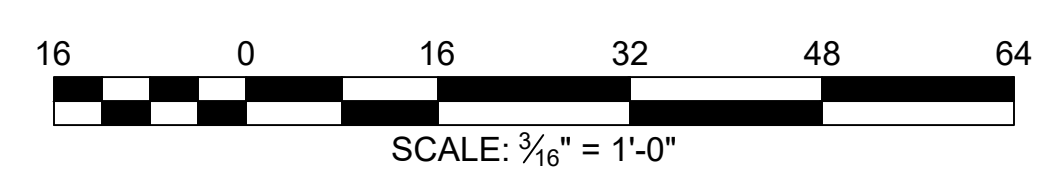
4/19/2023 9:22 AM - JUSTIN.M. N:ACTIVE PROJECTS\25225_VHB(SUNEA)T\SHAFTSBURY & FAIR_HAVEN_SS_UPGRADE & T&D_INTERCONNECT\06-DRAFTING\WORKING DRAWINGS\SUBSTATION\SHAFTSBURY\25225-SB SKT-0035001.DWG

- NOTES:**
1. GENERAL ARRANGEMENT AND ALL ASSOCIATED EQUIPMENT SHOWN IS FOR CONCEPTUAL PERMITTING PURPOSES ONLY.
 2. ALL EQUIPMENT AND LOCATIONS ARE SUBJECT TO CHANGE.
 3. SECTION OF BUS CONNECTING COLLECTOR SUBSTATION TO GMP SUBSTATION IS SHOWN AS IS FOR CONCEPTUAL PURPOSES ONLY. BUS ARRANGEMENT IS SUBJECT TO CHANGE.
 4. FUTURE TALLER STRUCTURES MAY EXIST WITHIN BOTH SUBSTATIONS AFTER A COMPLETE DIRECT STROKE ANALYSIS OF SUBSTATION AFTER DETAILED DESIGN.
 5. POC IS AT THE THE SWITCH TERMINAL PAD.



SKETCH

PRELIMINARY
NOT FOR CONSTRUCTION



REV.	DESCRIPTION:	DATE:	DRWN:	CHKD:	APPRD:
D	ISSUE FOR REVIEW	04/20/23	RDO	ZJS	JDM
C	ISSUE FOR REVIEW	03/21/23	RDO	ZJS	JDM
B	ISSUE FOR REVIEW	03/10/23	RDO	ZJS	JDM
A	ISSUE FOR REVIEW	12/07/22	RDO	ZJS	JDM



SOUTH SHAFTSBURY TRANSMISSION SUBSTATION GREEN MOUNTAIN POWER SHAFTSBURY, VT

SCALE: NTS SIZE: ARCH D

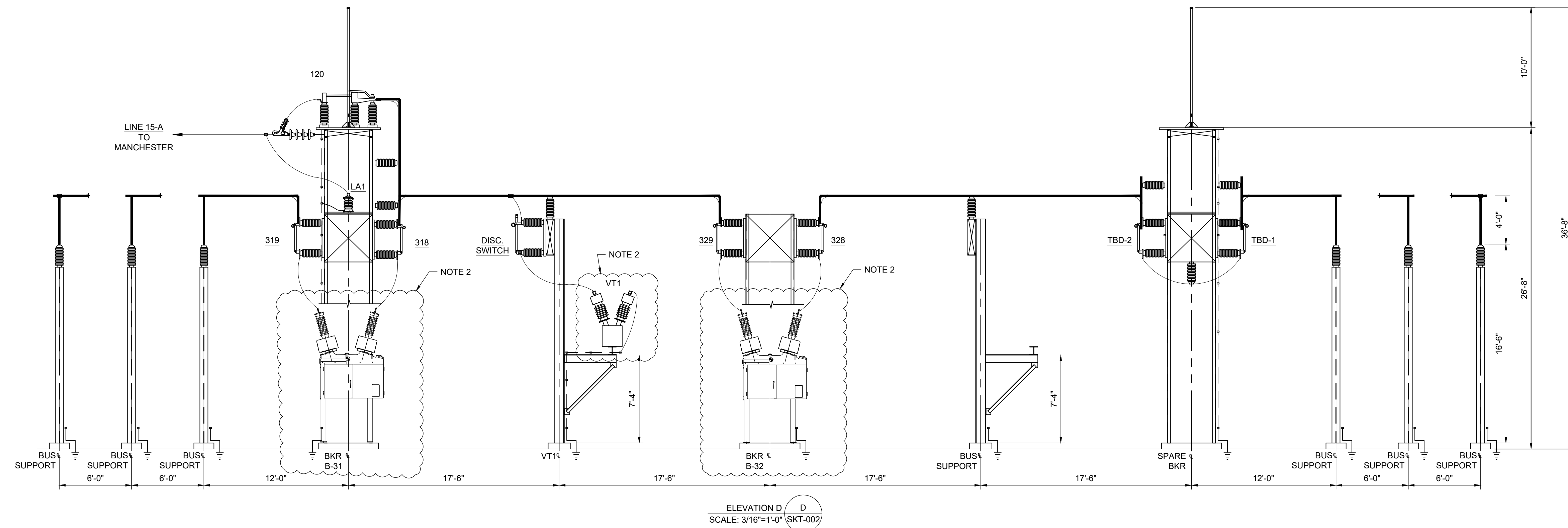
GENERAL ARRANGEMENT ELEVATIONS A & B

DATE:	12/2/22
DRAWN BY:	CJL
ENG'D BY:	ZJS
PROJECT #:	25225-SB
DRAWING #:	SKT-0035001

4/20/2023 2:41 PM - JUSTIN.M. N:ACTIVE PROJECTS\25225_VHBSUNEA\T\SHAFTSBURY & FAIR_HAVEN_SS_UPGRADE & T&D_INTERCONNECT\06-DRAFTING\WORKING DRAWINGS\SUBSTATION\SHAFTSBURY\25225-SB SKT-0035002.DWG

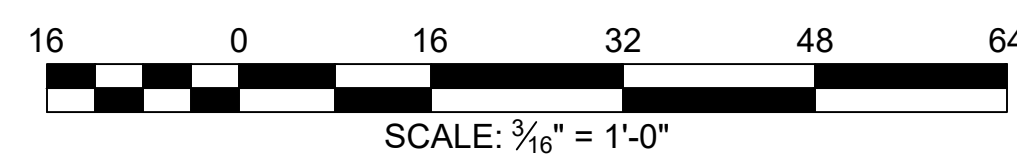
NOTES:

1. GENERAL ARRANGEMENT AND ALL ASSOCIATED EQUIPMENT SHOWN IS FOR CONCEPTUAL PERMITTING PURPOSES ONLY.
2. ALL EQUIPMENT AND LOCATIONS ARE SUBJECT TO CHANGE.
3. SECTION OF BUS CONNECTING COLLECTOR SUBSTATION TO GMP SUBSTATION IS SHOWN AS IS FOR CONCEPTUAL PURPOSES ONLY. BUS ARRANGEMENT IS SUBJECT TO CHANGE.
4. FUTURE TALLER STRUCTURES MAY EXIST WITHIN BOTH SUBSTATIONS AFTER A COMPLETE DIRECT STROKE ANALYSIS OF SUBSTATION AFTER DETAILED DESIGN.



SKETCH

PRELIMINARY
NOT FOR CONSTRUCTION



REV.	DESCRIPTION	DATE	RDD	ZJS	JDM
A	ISSUE FOR REVIEW	04/20/23	RDD	ZJS	JDM

RLC
ENGINEERING
267 Whitten Road
Hallowell, ME 04347
Phone 207-621-1077
Fax 207-621-1177
www.rlc-eng.com

**SOUTH SHAFTSBURY
TRANSMISSION SUBSTATION
GREEN MOUNTAIN POWER
SHAFTSBURY, VT**

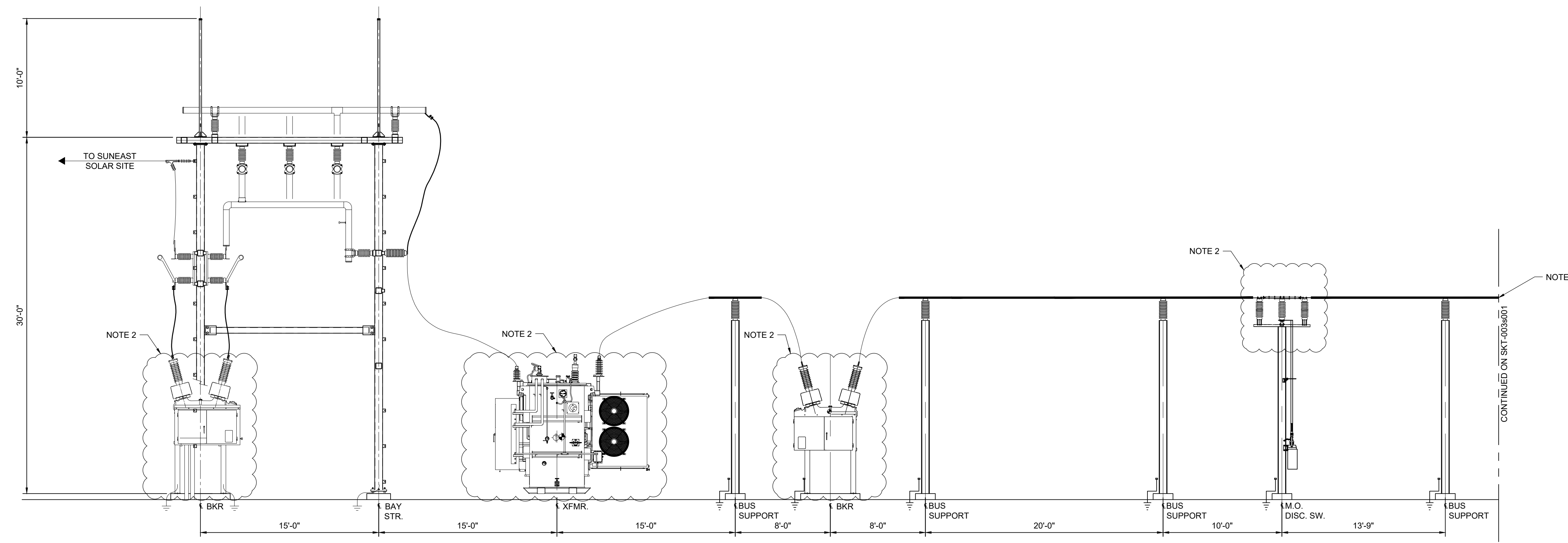
SCALE: NTS SIZE: ARCH D

GENERAL ARRANGEMENT ELEVATION D

DATE: 12/2/22
DRAWN BY: CJL
ENGINEER BY: ZJS
PROJECT #: 25225-SB
DRAWING #: SKT-0035002

4/20/2023 2:42 PM - JUSTIN.M. N:\ACTIVE PROJECTS\25225_VHB\SUNEAST\SHAFTSBURY & FAIR_HAVEN_SS_UPGRADE & T&D_INTERCONNECT\06-DRAFTING\WORKING DRAWINGS\SUBSTATION\SHAFTSBURY\25225-SB SKT-004.DWG

- NOTES:**
1. GENERAL ARRANGEMENT AND ALL ASSOCIATED EQUIPMENT SHOWN IS FOR CONCEPTUAL PERMITTING PURPOSES ONLY.
 2. ALL EQUIPMENT AND LOCATIONS ARE SUBJECT TO CHANGE.
 3. SECTION OF BUS CONNECTING COLLECTOR SUBSTATION TO GMP SUBSTATION IS SHOWN AS IS FOR CONCEPTUAL PURPOSES ONLY. BUS ARRANGEMENT IS SUBJECT TO CHANGE.
 4. FUTURE TALLER STRUCTURES MAY EXIST WITHIN BOTH SUBSTATIONS AFTER A COMPLETE DIRECT STROKE ANALYSIS OF SUBSTATION AFTER DETAILED DESIGN.

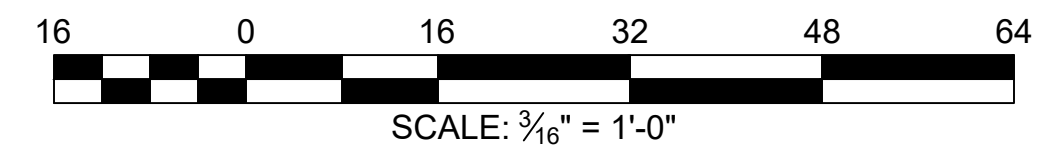


C ELEVATION C
SKT-002 SCALE: 3/16"=1'-0"

CONTINUED ON SKT-003:001

SKETCH

PRELIMINARY
NOT FOR CONSTRUCTION



REV.	DESCRIPTION	DATE	DRWN.	CHKD.	APPRD.
-	-	-	-	-	-
C	ISSUE FOR REVIEW	04/20/23	RDO	ZJS	JDM
B	ISSUE FOR REVIEW	03/10/23	RDO	ZJS	JDM
A	ISSUE FOR REVIEW	12/07/22	RDO	ZJS	JDM

RLC ENGINEERING
267 Whitten Road
Hallowell, ME 04347
Phone 207-621-1077
Fax 207-621-1177
www.rlc-eng.com

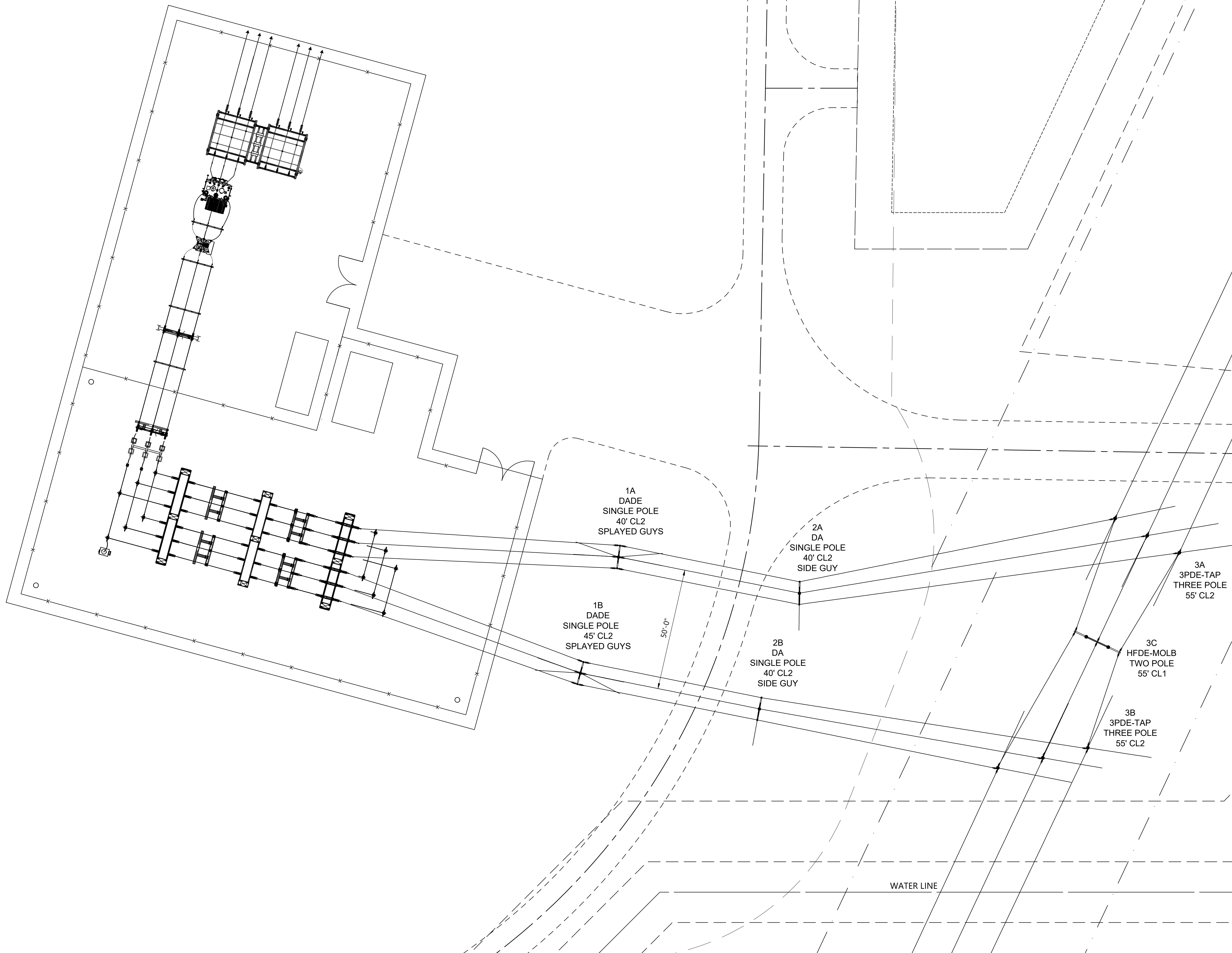
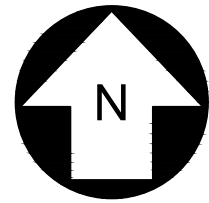
SHAFTSBURY SOLAR COLLECTOR SUBSTATION
SUNEAST
SHAFTSBURY, VT

SCALE: NTS SIZE: ARCH D

GENERAL ARRANGEMENT ELEVATION C

DATE:	12/2/22
DRAWN BY:	CJL
ENGINEER BY:	ZJS
PROJECT #:	25225-SB
DRAWING #:	SKT-004

4/20/2023 3:33 PM - CRAIGP - N\ACTIVE PROJECTS\25225 VHB(SUNEA)T\SHAFTSBURY & FAIR HAVEN_SS_UPGRADE & T&D_INTERCONNECT\07_TRANSMITTALS\SHAFTSBURY\LOT-012_SHAFTSBURY_SGIA_REVIEW & LATEST DRAWINGS\25225-SB-SKT-005.DWG



SKETCH

PRELIMINARY
NOT FOR CONSTRUCTION

REV.	DESCRIPTION	DATE	DRWN.	CHKD.	APRVD.
E	ISSUE FOR REVIEW	4/20/23	CRP	JJD	CRP
D	ISSUE FOR REVIEW	3/30/23	CRP	JJD	CRP
C	ISSUE FOR REVIEW	3/20/23	NEB	CRP	---
B	ISSUE FOR PERMIT	1/6/2023	---	CRP	---
A	ISSUE FOR PERMIT	12/07/22	---	CRP	---

RLC
ENGINEERING
267 Whitten Road
Hallowell, ME 04347
Phone 207-621-1077
Fax 207-621-1177
www.rlc-eng.com

SHAFTSBURY SOLAR
COLLECTOR SUBSTATION
SUNEA
SHAFTSBURY, VT
SCALE: 1"=20'
46KV TRANSMISSION TIE LINE
LAYOUT
DATE: 12/07/22
DRAWN BY: ---
ENGINEER BY: CRP
PROJECT #: 25225
DRAWING #: SKT-005